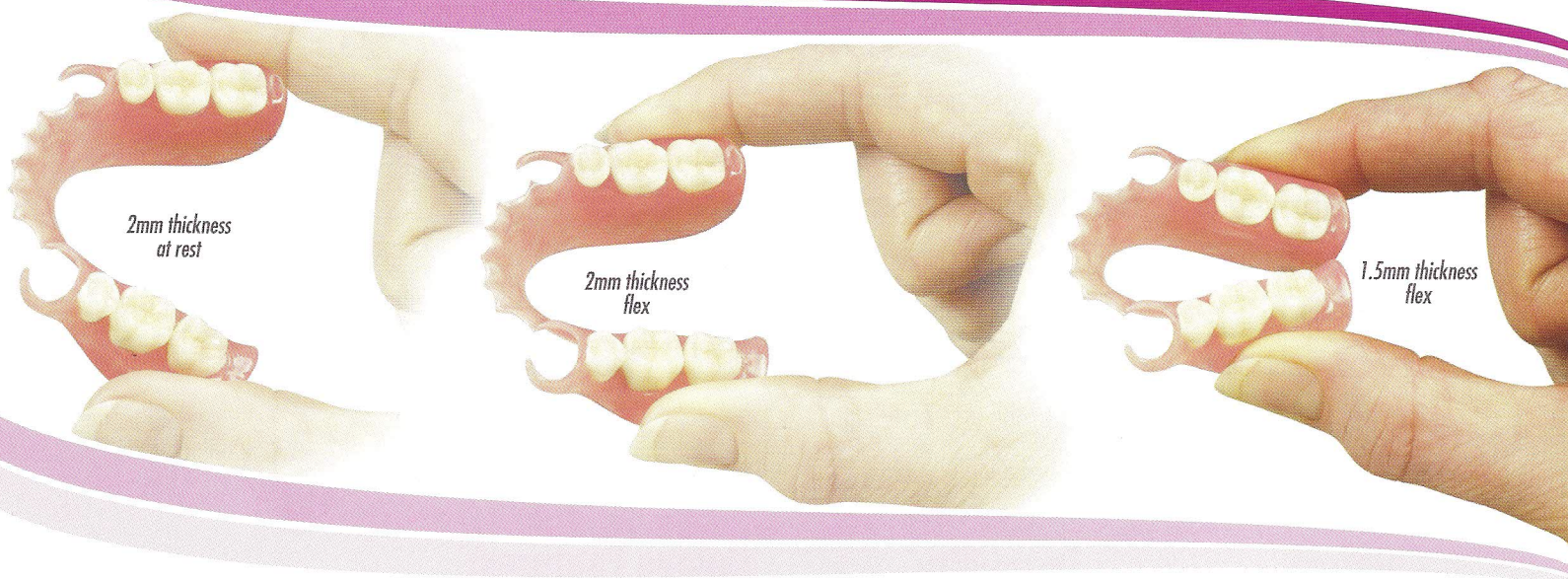


Lucitone® FRS™

Flexible Dental Resin

Customized Flexibility



With Lucitone® FRS™ you can offer your dentists a range of flexibility, from a firmer resilient design all the way to a super flexible partial.

Flexibility

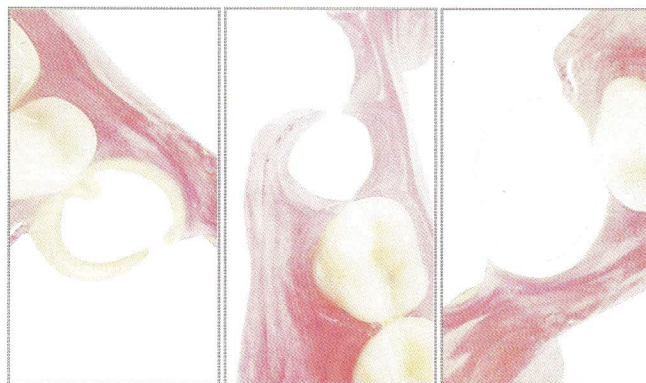
Only a dentist can determine the level of flexibility appropriate for their patient. Your laboratory can provide a range of flexibility from a firmer more resilient design (2mm thickness) all the way to a super flexible (1.5mm thickness) partial.



Offer a customized Lucitone FRS partial: customized flexibility, customized clasp shades.

Aesthetics

Lucitone FRS flexible partials offer a range of shades to customize the clasps. Dentists and patients can choose between pink to blend in with the gingival, clear, or tooth shades.*



Thermoflex™ Tooth Shaded clasp

Lucitone FRS Pink Clasp

Lucitone FRS Clear Clasp

For better dentistry

DENTSPLY
PROSTHETICS

*Tooth shades available using Thermoflex Acetal Resin only.

CE

R^xonly